



**SOLAR CAMPING  
AUSTRALIA**

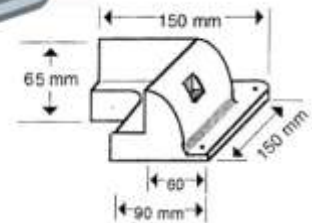
www.solarcampaingaustralia.com.au

A.B.N. 50 344 594 974

Email: solarca@optusnet.com.au

## Plastic Mounting Accessories

### SCA-CBLOCK Corner mount 4 Pk



### Product Features:

- An ideal way to fix solar panels on the roof or deck of motor homes, caravans and boats
- The mounts can be safely bonded to the surface removing the need to drill holes
- Mounts also act as a wind deflector and maintain the correct air gap between the solar panel and the roof top/deck.
- No sharp corners for protective covers to get caught on.
- The panel corner moulds protect the corners of the solar panels from damage.
- ABS plastic made, Environment Friendly and UV Resistance
- Just 1.6KG Per SET, much lighter than metal mount.

Solar Camping Australia corner mounts compatible with 60W, 80W and 130W panels (4 pack)





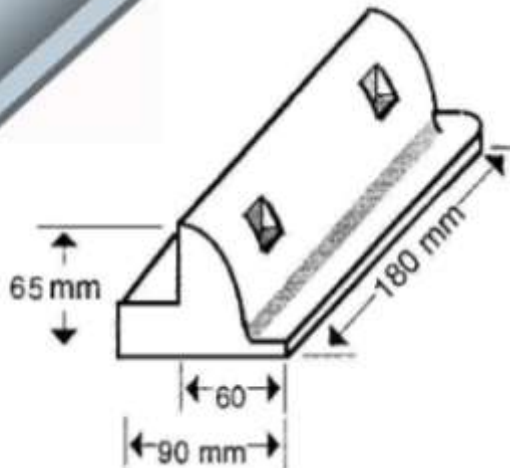
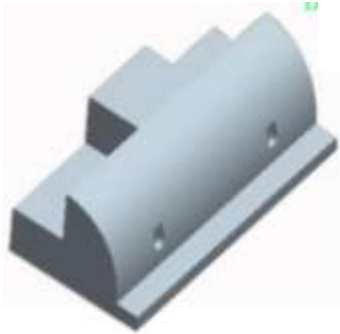
**SOLAR CAMPING  
AUSTRALIA**

[www.solarcampingaustralia.com.au](http://www.solarcampingaustralia.com.au)

A.B.N. 50 344 594 974

Email: [solarca@optusnet.com.au](mailto:solarca@optusnet.com.au)

### SCA-SBLOCK: 180mm side mount 2PK



### Product Features:

- An ideal way to fix solar panels on the roof or deck of motor homes, caravans and boats
- The mounts can be safely bonded to the surface removing the need to drill holes
- Mounts also act as a wind deflector and maintain the correct air gap between the solar panel and the roof top/deck
- The panel corner moulds protect the corners of the solar panels from damage
- The 180mm panel mounts (Order Code: **SCA-SBLOCK**) can also be used in conjunction with the panel corner moulds (Order Code: **SCA-CBLOCK**) and the 530mm panel mount (Order Code: **SCA-LBLOCK**)
- ABS plastic made, Environment Friendly and UV Resistance
- Just 0.9KG Per SET, much lighter than metal mount.

Solar Camping Australia 180mm panel mount use in conjunction with corner moulds and 530mm panel mount with 60W, 80W and 130W





**SOLAR CAMPING  
AUSTRALIA**

[www.solarcampingaustralia.com.au](http://www.solarcampingaustralia.com.au)

A.B.N. 50 344 594 974

Email: [solarca@optusnet.com.au](mailto:solarca@optusnet.com.au)

## SCA-LBLOCK 530mm long side mount 2PK



### Product Features:

- An ideal way to fix solar panels on the roof or deck of motor homes, caravans and boats.
- The mounts can be safely bonded to the surface removing the need to drill holes
- Mounts also act as a wind deflector and maintain the correct air gap between the solar panel and the roof top/deck
- The panel corner moulds protect the corners of the solar panels from damage
- The the 530mm panel mount (Order Code: **SCA-LBLOCK**) can also be used in conjunction with the panel corner moulds (Order Code: **SCA-CBLOCK**) and the 180mm panel mounts (Order Code: **SCA-SBLOCK**).
- ABS plastic made, Environment Friendly and UV Resistance
- Just 2.1KG Per SET, much lighter than metal mount.

Solar Camping Australia 530mm panel mount use in conjunction with corner moulds and 180mm panel mount with 80W, and 130W



## SCA-CENTRY Solar cable entry box



### Product Features:

To be used where a neat waterproof seal is required at the point where the cable from your solar panels enter into your vehicle. Especially for RV, Motor home, Caravan, Camping and Marine solar power systems.

- Waterproof IP66
- Able membrane cable seals
- For all cable types 6mm to 12mm in diameter.
- High quality, strong UV stable injection molding
- Roof or wall mounting
- Easy to install just with glue.
- Perfect for solar panels and other external devices